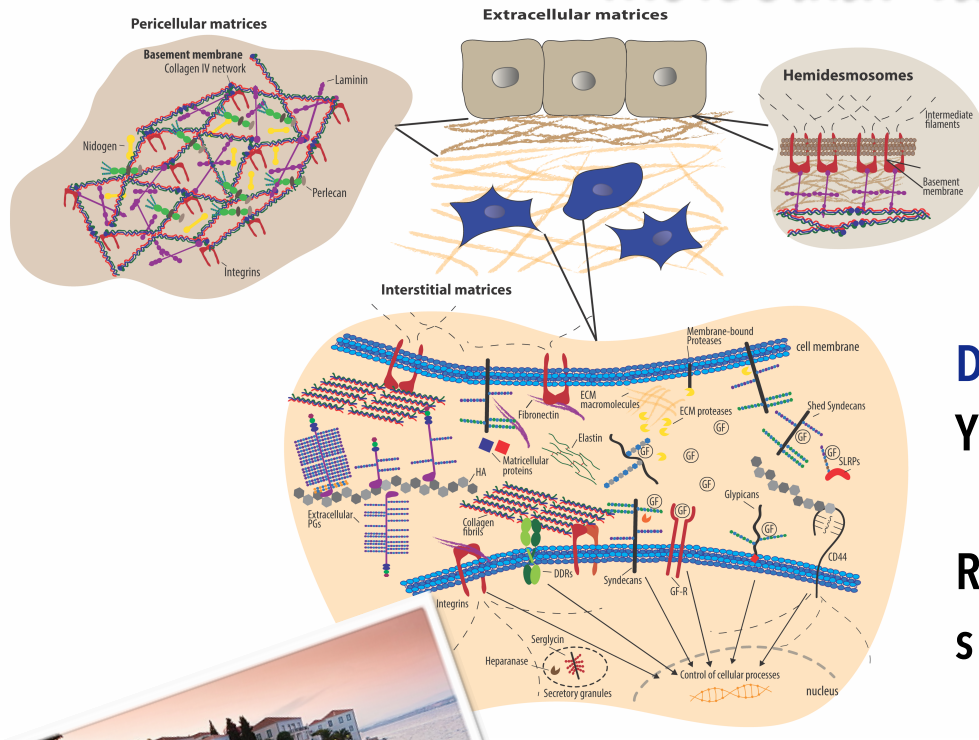


# FEBS Advanced Lecture Course

## 6<sup>th</sup> FEBS-MPST 2017

### Matrix Pathobiology, Signaling and Molecular Targets



MAY  
**25-30**  
SPETSES ISLAND

#### Deadlines

YTF applicants

**February 7<sup>th</sup>, 2017**

Registration & abstract  
submission

**February 28<sup>th</sup>, 2017**



## Invited Speakers

Renato V. Iozzo (USA), Sylvie Ricard-Blum (France), John R. Couchman (Denmark), Yoshifumi Itoh (UK), Liliana Schaefer (Germany), Elvira V. Grigorieva (Russia), Paraskevi Heldin (Sweden), Raymond Boot-Handford (UK), Stephane Brezillon (France), Alberto Passi (Italy), Markku Tammi (Finland), Ilona Kovalszky (Hungary), Ralph D. Sanderson (USA), Martin Götte (Germany), Mauro Pavao (Brazil), Patricia Rousselle (France), Maurizio Onisto (Italy), Daniela G. Seidler (Germany), Geir Christensen (Norway), Marco Franchi (Italy), François-Xavier Maquart (France)

## Organizing Committee

Nikos K. Karamanos (chairman), Renato V. Iozzo, John Couchman, Liliana Schaefer, Dimitris Kletsas, Achileas Theocharis, Spyridon Skandalis, Chrysostomi Gialeli

Contact: [n.k.karamanos@upatras.gr](mailto:n.k.karamanos@upatras.gr)